



Should I rest or should I go now? A comparison between fixed and self-selected rest durations in high-intensity interval training cycling sessions

Supplementary materials:
<https://osf.io/equwy/>
For correspondence:
ihalperin@tauex.tau.ac.il

Eyal Colorni^{1,2}, Evyatar Ohayon², Julie N.Côté^{3,4}, Uri Obolski^{5,6,†}, Israel Halperin^{1,2,†*}

¹Department of Health Promotion, school of Public Health, Sackler Faculty of Medicine, Tel-Aviv University, Tel-Aviv, Israel

²Sylvan Adams Sports Institute, Tel Aviv University, Tel-Aviv, Israel

³Department of Kinesiology and Physical Education, McGill University, Montreal, Quebec, Canada

⁴Occupational Biomechanics and Ergonomics Laboratory, Michael Feil and Ted Oberfeld/CRIR Research Centre, Jewish Rehabilitation Hospital, Laval, Quebec, Canada

⁵Department of Epidemiology and Preventive Medicine, School of Public Health, Sackler Faculty of Medicine, Tel Aviv University, Tel Aviv, Israel

⁶Department of Environmental Studies, Porter School of the Environment and Earth Sciences, Sackler Faculty of Exact Sciences, Tel Aviv University, Tel Aviv, Israel

† Equal senior authors

Please cite as: Colorni, E., Ohayon, E., Côté, J.N., Obolski, U., Halperin, I. (2023). Should I rest or should I go now? A comparison between fixed and self-selected rest durations in high-intensity interval training cycling sessions. *SportRxiv*.

ABSTRACT

Background: In high-intensity interval training (HIIT), the rest durations between intervals are commonly prescribed using a fixed approach (e.g., 30 seconds between intervals). An alternative is the self-selected (SS) approach, in which trainees select their resting durations. Studies comparing the two approaches report mixed results. However, in these studies, trainees in the

All authors have read and approved this version of the manuscript.

This article was last modified on January 23, 2023.

SS condition rested for as little or as long as they wished, leading to dissimilar total rest durations between conditions. Here, for the first time, we compare the two approaches while controlling for total rest duration.

Methods: Twenty-four amateur adult male cyclists completed a familiarization session, followed by two counterbalanced cycling HIIT sessions. Each session was composed of nine, 30-second intervals, in which the goal was to accumulate as many watts as possible on an SRM ergometer. In the fixed condition, cyclists rested for 90 seconds between intervals. In the SS condition, cyclists had 720 seconds (i.e., 8x90 seconds) of rest to allocate in any way they wished. We measured and compared watts, heart rate, electromyography of the knee flexors and extensors, rating of perceived effort and fatigue, perception of autonomy and enjoyment. Additionally, a subsample of ten cyclists completed a retest of the SS condition.

Results: With the exception of perception of autonomy, which was higher in the SS condition, both aggregated and across-interval outcomes were highly similar in both conditions. For example, the average aggregated differences were: 0.57 (95% CI -8.94, 10.09) for watts; -0.85 (95% CI -2.89, 1.18) for heart rate; and 0.01 (95% CI -0.29, 0.30) for rating of perceived effort (on a 0-10 scale). Additionally, the retest of the SS condition resulted in a similar rest allocation pattern across the intervals and in similar outcomes.

Conclusion: Given the similarities between the fixed and SS conditions, both can be equally utilized based on coaches' and cyclists' preferences and training goals.

Keywords: Self-selected rest, HIIT, sEMG, cyclists, RPE

Introduction

High-intensity interval training (HIIT) is a widely used training modality aimed to improve cardiorespiratory fitness among athletes from a range of sports, particularly endurance-based ones (e.g., runners, rowers, cyclists) [1,2]. While HIIT can be prescribed in several ways, its basic tenets include repeated high-intensity and short-duration bouts (intervals) interspersed with rest periods [2,3]. The improvement in $VO_2\text{max}$ following HIIT sessions is well documented [2,4,5], and presumed to result from the total time spent near $VO_2\text{max}$ (>90% $VO_2\text{max}$) [6-8]. Whereas the intervals increase oxygen consumption, which can lower the overall aerobic stimulus [9]. However, the rest periods allow subsequent intervals to be performed with sufficiently high intensity [9]. Accordingly, prescribing different rest durations in HIIT sessions could impact physiological and performance-related outcomes.

The rest duration in HIIT is traditionally prescribed using a fixed approach, in which athletes are prescribed active or passive rest periods of predetermined durations, with work-to-rest ratios ranging from 1:0.5 to 1:20 [2,9]. While the fixed approach is straightforward, well-studied, and

effective, it has several shortcomings. First, a fixed rest duration does not account for inter- and intra-individual differences in physiological and performance outcomes. Some may prefer to rest for shorter durations between the first few intervals and finalize the session with longer rest durations; others may prefer the opposite. Accounting for one's preferences via choice provision can lead to positive psychological effects [10-12] and, at times, better performance outcomes [13,14] (although see examples of null effects [15,16]). Finally, fixed rest duration does little to challenge athletes' decision-making processes. Yet, in endurance competitions, athletes are required to strategically increase, decrease, or maintain speed as a function of the distance left to the finish line and their location relative to other competitors [2,17]. Thus, incorporating self-selection into HIIT training could benefit both cardiovascular and strategic components.

An alternative approach for prescribing rest periods in HIIT is the self-selected (SS) approach, in which athletes choose the rest duration. The SS approach has the potential to account for the shortcomings of the fixed approach mentioned above. First, athletes choose the rest duration based on their current and anticipated performance, which can better account for individual differences. Second, the act of choosing can enhance motivation [11], enjoyment [12], and at times, motor performance [13,14]. Third, the SS approach can challenge and improve athletes' decision-making processes in competitions, by having them practice when and how to use their rest periods in training. Many studies have compared the fixed and SS approaches using different choice options (e.g., exercises' order [18]) and different training modalities (e.g., resistance exercises [15]). Yet, only a handful of studies compared fixed and SS approaches using rest duration as the choice option during HIIT sessions, and these studies reported mixed results [19–25].

Some of the studies mentioned above resulted in subjects choosing shorter [20,22] or longer [21,23,24] rest durations compared to the fixed conditions. Moreover, performance outcomes (e.g., covered distance or speed) varied between studies, resulting in superior [21,23,24] or inferior [20,22] outcomes in the SS conditions. These inconsistent results may stem from several reasons, including the different HIIT protocols (e.g., 4x4 minutes [24] vs. 12x30 meters [21]) and the rest durations provided in the fixed condition (e.g., 3 minutes [25] vs. 30 seconds [23]). Regardless, they all share a common study design feature – the total rest duration between conditions was not matched. That is, subjects selected their rest duration independently of the assigned rest duration in the fixed condition. This design precludes the ability to disentangle the direct effects of choice from the mediation caused by the total rest duration on performance, physiological, and psychological outcomes. Practically, uncontrolled rest durations allow subjects to select overly short or long rest durations, which can contradict the session's goals. It can also prevent coaches from planning the overall session duration, given that the selected rest duration

can vary considerably, especially in team settings. Finally, when the rest duration is unconstrained, the subjects' decision-making process in each interval has little bearing on future intervals. In contrast, when the rest duration is close-ended, each choice concerning the rest duration has substantial effects on subsequent intervals. The latter can be presumed to have higher relevance to endurance competitions.

Accordingly, the present study aimed to compare, for the first time, the effects of fixed and SS conditions in a cycling HIIT protocol with an identical total rest duration. To this end, we performed a randomized cross-over study with 24 amateur male cyclists, measuring performance, physiological, and psychological outcomes. We chose cyclists as the study population due to their requirements for well-developed aerobic capacity and their common usage of HIIT [4,26–28].

Methods

Subjects

We recruited 24 male amateur cyclists (mean (standard deviation); age: 36.6 (7.2) years; weight: 76.2 (12.7) kg; height: 1.75 (5.6) cm). Inclusion criteria included healthy cyclists between the ages of 18 and 45 who cycle for a total of at least 200 km a week for at least one year. We recruited cyclists through advertisements posted on various social media channels.

Procedures

We implemented a randomized cross-over design. All cyclists attended three laboratory sessions: a familiarization session, and two experimental sessions, between three and eight days apart. In the familiarization session, after signing a consent form, we provided explanations about the protocol and outcomes, customized the seat height and handlebars of the SRM ergometer (Schoberer Rad Meßtechnik - SRM International, Jülich, Germany), and familiarized cyclists with the experimental conditions. The cyclists were block-randomized (50%-50% split) to first perform one of two conditions described below. Both sessions included a protocol composed of nine intervals lasting 30 seconds each. The goal in both conditions was to maximize the total amount of watts produced over these nine intervals. Under the fixed condition, cyclists rested for 90 seconds between intervals, totaling 720 seconds of rest (12 minutes). Under the SS condition, cyclists selected how long they would rest between the nine intervals. However, we matched the total rest duration between conditions, so that cyclists had to use 720 seconds of rest throughout the protocol (after the first and before the last interval) in any way they chose. Resting in both conditions consisted of pedaling on a resistance of 50 watts. We inspected the test-retest reliability of the SS condition among ten cyclists who participated in a fourth session replicating the SS session.

We presented cyclists with a timer on a computer screen next to the ergometer. In the fixed-rest condition, the timer counted 90 seconds between intervals. In the SS condition, an on-screen 720-second countdown began during the rest periods (Figure 1). When the cyclists announced they were ready to start the successive interval, the researcher began a 10-second verbal countdown, after which the interval would commence, and the timer paused. Once the set was completed, the countdown continued, and a checkmark was drawn on a board in front of the cyclist representing the completed sets. Cyclists completed the same incremental warmup in all sessions, consisting of three, four-minute bouts of cycling at a resistance of 100, 125, and 150 watts, respectively. After one minute of active rest, cyclists performed an all-out six-second sprint to assess their maximal power, followed by two minutes of active rest before performing the first set of the protocol. Two minutes after the last interval, cyclists completed another six-second maximal effort sprint to assess the impact of the protocol on maximal power, to provide an indication of fatigue. We recorded heart rate (HR) and electromyography (EMG) of the Vastus Lateralis (VL) and Biceps Femoris (BF) of their left leg. Cyclists also provided their rating of perceived effort (RPE) after each interval and their rating of perceived fatigue (ROF), perception of autonomy, and enjoyment after each session.

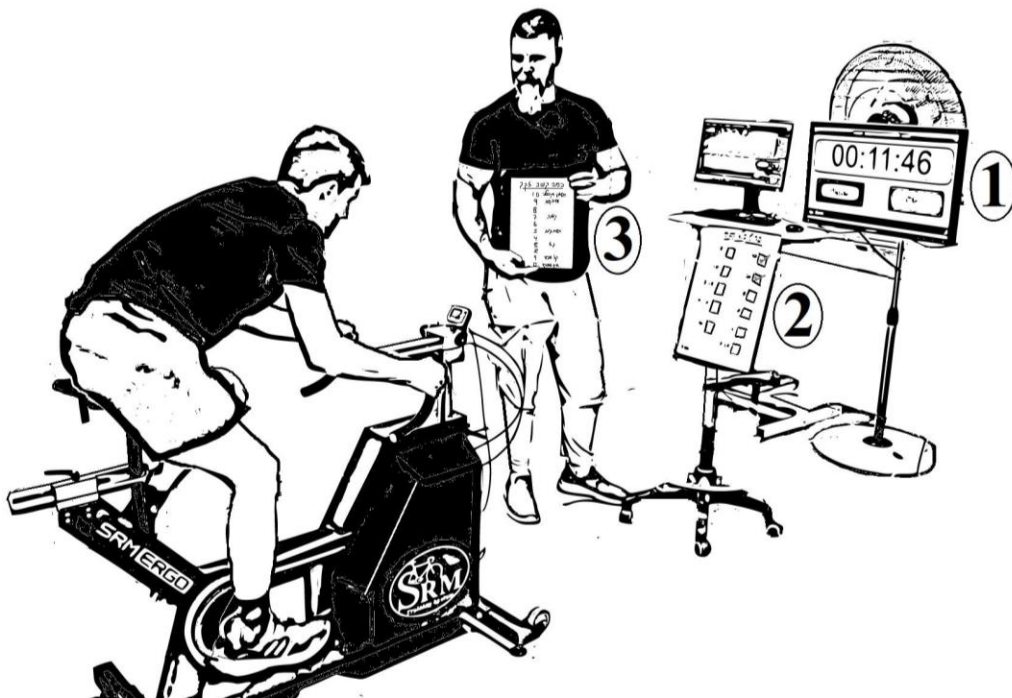


Figure 1. Experimental setup. (1) Computer screen with timer, (2) small whiteboard with list of completed intervals and (3) clipboard with RPE and ROF scales.

Familiarization (session 1)

To reduce the likelihood of potential biases, we told cyclists that the study's goals were to examine the test-retest reliability of their watt production and heart rates over the sessions. Following the explanations, anthropometric measurements, and warmup, we familiarized participants with both experimental conditions. Cyclists completed a partial protocol composed of four intervals per condition. Specifically, cyclists performed four intervals under the fixed condition with 90 seconds of rest between each interval, for a total of 270 seconds (4.5 minutes). They then rested for five minutes and performed four intervals under the SS rest condition, in which they selected how long to rest between intervals, provided they used all 270 seconds. The order of the two conditions was randomized and counterbalanced between cyclists. The timer was reset every 90 seconds in the fixed condition or kept continuously running for 270 seconds in the SS condition during each rest period. Cyclists were instructed that the goal was to accumulate the maximum total amount of watts across the intervals.

Experimental sessions (sessions 2-3)

We briefly reviewed how to rate effort and fatigue using the different questionnaires, and had cyclists perform the warmup followed by the six-second sprint. After two minutes of active rest, cyclists completed the entire protocol, composed of nine 30-second intervals. The procedure was comparable to the familiarization session with two differences: cyclists only completed one of the conditions, and the protocol consisted of nine rather than four intervals. The latter implied that the total rest period between intervals was 720 seconds (90 seconds x 8 rest intervals). Hence, in the SS condition, the countdown began 720 seconds.

Outcome measures

Performance measures

Watts: We measured watts produced on the SRM in the isokinetic mode at a rate of 1 Hz in each interval and the accumulated sum in each protocol.

Physiological measures

HR: We measured the peak heart rate per minute of each interval using a complementary SRM chest strap monitor, which was stored on the same SRM recording software.

EMG: We measured muscle activity of the left leg VL and BF using two Tringo® Wireless Biofeedback System surface electromyography (EMG) sensors, attached and secured to the muscle bellies using customized glue strips and medical tape (Delsys Incorporated, Natick, MA, USA). The attachment location and position were determined using the SENIAM protocol (<https://www.seniam.org>). We used the power spectral density function to extract the median frequency (MDF) (See supplementary information for data preparation and preprocessing procedures).

Psychological measures

RPE: After each interval, we presented the cyclists with a 0 (no effort) to 10 (maximal effort) RPE scale and asked them to provide an answer to the question, “How much effort did you exert?” with reference to the currently completed interval. In the familiarization session, cyclists received an explanation that effort is the process of investing mental and physical resources in a task, and that RPE is the perceived investment of one’s physical or mental resources to perform a specific task out of a perceived maximum [29]. Zero was anchored at total rest and 10 at cycling as fast and as hard as possible in a 30-second interval.

ROF: After completing the second sprint, we presented the cyclists with a 0 (not fatigued at all) to 10 (total fatigue and exhaustion—nothing left) ROF scale and asked them to provide an answer to the question, “How fatigued are you?”. We followed the recommendations by Micklewright et al. [30] on how to explain, instruct and anchor the lower and upper values of the ROF scale.

Perceptions of autonomy: Approximately five minutes after the cool-down, we presented cyclists with three questions from the Intrinsic Motivation Inventory questionnaire [31,32]: “1. The way I exercised today is aligned with my choices and preference.”, “2. I feel the way I exercised today is the way I want to exercise.”, and “3. I feel like I could make decisions regarding how I exercised today.” to which the answers ranged from 1 (“I totally disagree”) to 5 (“I totally agree”).

Enjoyment: A few minutes after the cool-down, we presented cyclists with the question, “How much did you enjoy today’s session?” to which the answers ranged from 1 (“Not at all”) to 7 (“Exceptionally so”).

Statistical analysis

Single-measurement analyses

Paired t-tests were used to derive confidence intervals (CI) and p-values for the difference between the conditions for all outcome measurements (watts, HR, MDF VL and BF, and RPE, ROF, perception of autonomy and enjoyment). Note that outcomes measured multiple times across the session were aggregated by averaging over the intervals, thus providing a single number for each measurement, for each subject-condition combination.

Multiple-measurement analyses

When characterizing the changes of the different measurements over the intervals, we employed generalized additive mixed-effects models (GAMMs). GAMMs are an extension to generalized linear mixed-effects models, where the assumption of a linear effect of a covariate is replaced with a smooth estimation of said effect using splines [33]. We fitted GAMMs with a Gaussian distribution and identity link, thin-plate basis function, and a basis dimension of 3, with the following form:

$$y_{ijt} = \beta_0 + \gamma_{0i} + \beta_{Cond} \cdot j + f^{rand}_{ij}(t) + f^{fixed}_j(t) + \epsilon_{ijt} \quad (1)$$

where y is the measurement of interest (rest duration, watts, HR, MDF VL and BF, and RPE); i denotes each cyclist; $j=0,1$ is the condition (fixed and self-selected, respectively); and $t=1,..,9$ is the interval number (or the period between the sets, limited to $t=1,..,8$, when the dependent variable is the rest time). A random intercept was assigned to each subject (γ_{0i}), a random smooth term of t was assigned to each subject-condition combination ($f^{rand}_{ij}(t)$), and a fixed intercept (β_{Cond}) and a fixed smooth term of set ($f^{fixed}_j(t)$) were assigned to $condition$. When testing significance of the interaction between the smooth terms and $condition$, we changed the GAMMs formulation to increase statistical efficiency. In this case, a smoothed term was fitted to the interval number ($f^{fixed}(t)$) and another smooth term for any difference due to the self-selected group ($f^{fixed}_{diff}(t)$). The rest of the formulation was as in equation (1). Then, the p-value for $f^{fixed}_{diff}(t)$ was estimated.

Difference-in-differences

When analyzing the pre-post six-seconds sprints, a difference-in-differences approach was used. That is, for each measurement, we subtracted each cyclist's second sprint result from the first sprint result under the fixed condition and subtracted it from the same difference under the self-selected condition. Similarly to the single-measurements, t-tests were used to derive CIs and p-values for this procedure.

Test-retest analyses

All analyses of retests were performed analogously to the analyses described above, while using only ten cyclists who performed the retest (age: 35.6 (7.92) years; weight: 77.69 (12.99) kg; height: 1.76 (0.05) cm) and exchanging the fixed condition with a retest condition.

Results

We present the study results stratified by outcome categories: rest duration, performance, physiological, and psychological outcomes. Note that due to the large number of outcome measures, only a subset is presented graphically, whereas summary and inferential statistics for all measured variables are presented in the tables in the main text and in the supplementary information. Across all outcomes, the retest produced highly consistent results. Excluding the result duration outcome (presented below), the test-retest comparisons are presented in detail in the supplementary information (Tables S1, S4, S6, S8, S10, S12 and S13).

Self-selected rest duration

We compared the SS rest duration to the 90 seconds rest allocated in the fixed condition. Between intervals 1-4, cyclists chose to rest for shorter durations; whereas, approximately after the sixth interval, cyclists considerably increased their rest durations (Figure 2A). Although variability between cyclists' rest durations was noticed, a very similar average pattern was observed in the retest of a sub-sample of ten cyclists (Figure 2B; Table S2).

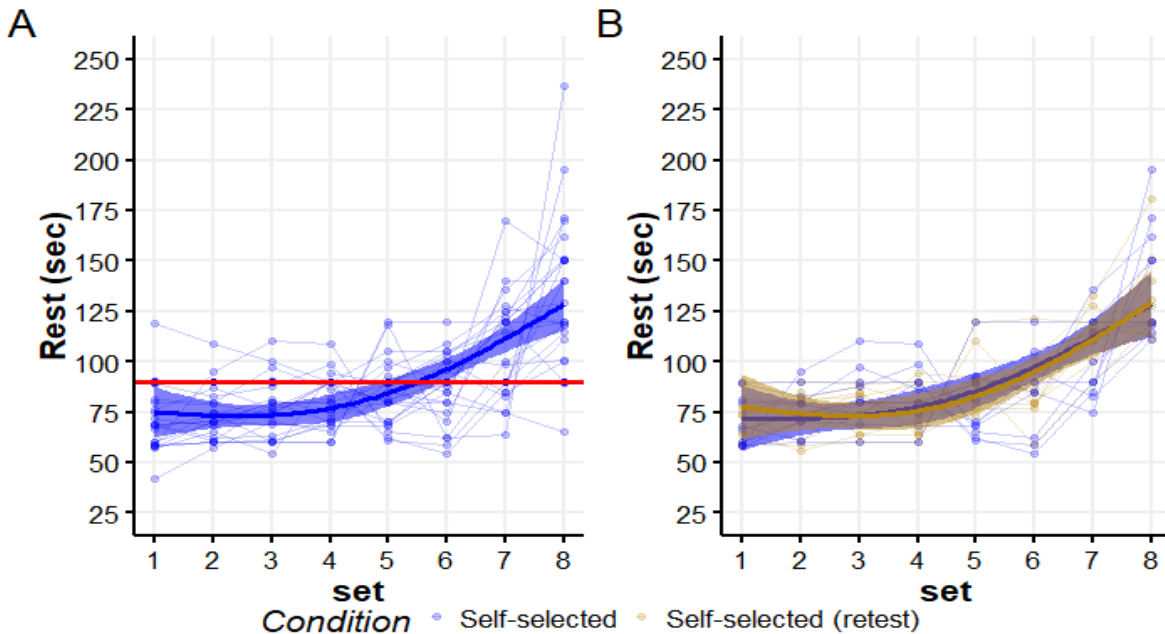


Figure 2: Self-selected rest durations between the nine intervals. The thin lines represent self-selected rest durations by the cyclists, whereas the thick lines and error bands represent a GMM-based estimation of the average rest duration and their 95% CIs, respectively. (A): Comparison between the fixed and SS conditions for 24 cyclists. The red horizontal line represents the 90-seconds fixed rest duration allocated in the fixed condition. (B): Comparison between the test (blue) and retest (yellow) in a subsample of 10 cyclists, under the SS condition.

Performance outcomes

Watts served as our performance metric. Both the average watts throughout the sessions (Figure 3A, Table 1) and patterns of watt production across the intervals (Figure 4A, Table S5) were highly similar under both conditions. We note the non-linear patterns of watt productions: declining at first, plateauing mid-sessions, and slightly increasing towards the end. This end-sprint-like pattern was slightly more pronounced under the SS condition, possibly due to the longer rest durations at the end of the sessions, as described above (Figure 4A).

When inspecting the pre-post six-seconds sprints, the patterns were again highly similar. The average watts produced in the pre-test (Fixed: 913.7(170.0) watts; SS: 908.2(162.0) watts) and in the post test (Fixed: 802.0(107.7) watts; SS: 808.7(110.9) watts), were similar, and produced a highly similar difference-of-differences (12.1, 95% CI (-19.4,43.7); p-value=0.43).

Table 1: Comparisons of single-measurements across intervals for self-selection and fixed conditions. P-values and CIs derived from paired t-tests.

	Fixed (Means (SD))	Self-Selected (Means (SD))	Mean difference (95%CI)	P-value
Watts	466.18 (63.43)	465.60 (56.41)	0.57 (-8.94 , 10.09)	0.9
HR	166.34 (9.13)	167.19 (10.06)	-0.85 (-2.89 , 1.18)	0.39
MDF VL	87.17 (19.63)	88.20 (16.92)	1.02 (-4.75 , 6.80)	0.71
MDF BF	67.9(18.9)	62.2(12.5)	5.60 (-1.7, 13.1)	0.12
RPE	8.16 (1.09)	8.15 (0.94)	0.008 (-0.29 , 0.30)	0.95
ROF	7.66 (1.46)	7.62 (1.46)	-0.04 (-0.89 , 0.81)	0.92
Autonomy 1	3.04 (1.37)	4.08 (1.18)	-1.04 (-1.88 , -0.20)	0.02
Autonomy 2	3.25 (1.11)	3.79 (1.10)	-0.54 (-1.20 , 0.12)	0.1
Autonomy 3	2.58 (1.35)	4.17 (1.05)	-1.58 (-2.36 , -0.81)	0.0003
Enjoyment	5.50 (1.02)	5.50 (1.32)	0.00 (-0.53 , 0.53)	1

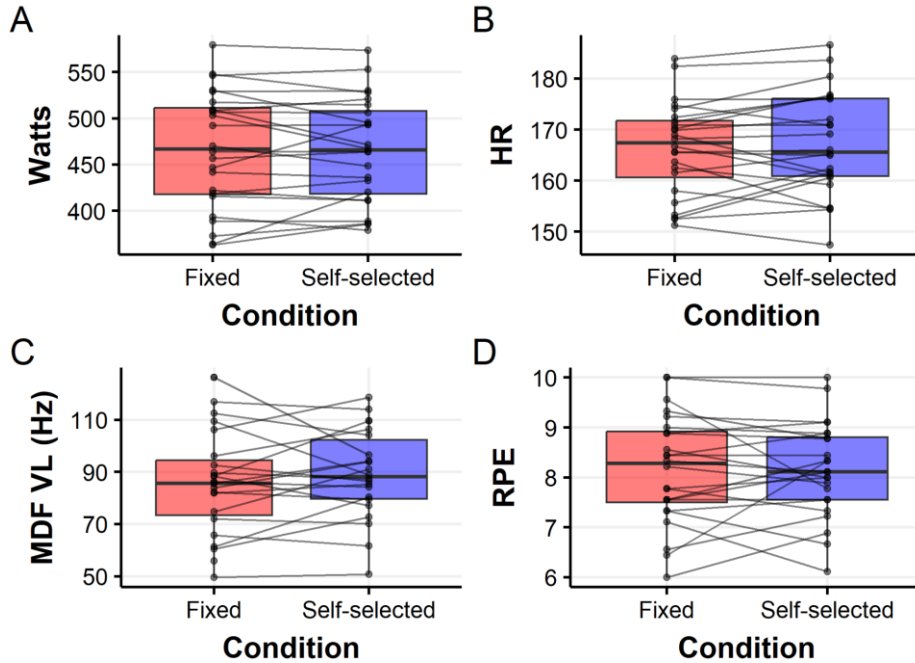


Figure 3: Comparisons of aggregated outcomes between fixed and SS conditions for Watts (A), HR (B), MDF VL (C), and RPE (D). Each horizontal line connects between the values of a single cyclist in both conditions, overlaid on boxplots.

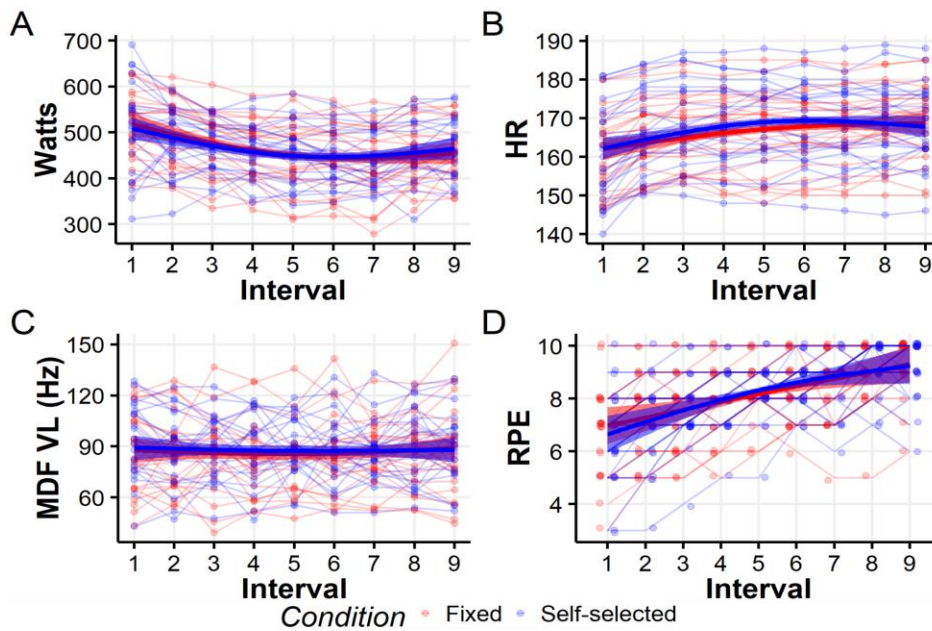


Figure 4: Multiple-measurement comparisons between fixed and SS in Watts (A), HR (B), MDF VL (C), and RPE (D). The thin lines represent individual outcomes of each cyclist, under the fixed (red) and SS (blue) conditions, whereas the thick lines and error bands represent a GAMM-based estimation of the average outcomes and their 95% CIs, respectively. Note that RPE measures were slightly jittered for clearer visualization, due to overlapping values (but left unchanged in the analyses).

Physiological outcomes

Two physiological outcomes were measured: HR and the MDF of the VL and BF muscles. The average HR, MDF of the VL and BF throughout (Figure 3B-C, Table 1) and across the session (Figure 4B-C, Tables S3, S7 and S9 accordingly) were highly similar under both conditions. We note the concave pattern of HR, in contrast to the linear, slightly decreasing pattern of VL.

Psychological outcomes

Four psychological outcomes were measured: RPE, ROF, autonomy, and enjoyment. RPE was the only outcome that was measured after every interval. Analogously to the outcomes described above, the average RPE throughout (Figure 3D, Table 1) and across the session (Figure 4D, Table S11) were highly similar under both conditions. As might be expected, RPE increased with subsequent intervals, and this increase was approximately linear. ROF and enjoyment, which were measured at the end of each session, also exhibited highly similar results between the conditions (Table 1), indicating moderate-high levels of both perceived fatigue and enjoyment. Finally, perception of autonomy, which consists of three questions, was provided at the end of each session. The results of all three questions demonstrated a higher perceived autonomy under the SS condition, with differences ranging from about 0.5 to 1.5 mean estimates (on a scale of 1-7). However, the certainty around the mean estimates differed (Table 1).

Discussion

We compared the effects of fixed and SS conditions in HIIT cycling sessions, while matching the total rest durations, on performance, physiological, and psychological outcomes, among 24 amateur male cyclists. Excluding perceptions of autonomy, which were higher in the SS condition, we found no statistical or substantial differences between the conditions in any other outcome. When inspecting the rest duration distribution, we found that cyclists selected to rest for shorter durations in the first five intervals, and for longer duration in the last three intervals, compared to the fixed condition. Furthermore, the same rest distribution was repeated in a retest session among the ten cyclists who completed it.

Although other studies have compared fixed and SS conditions in HIIT protocols [19–25], it is challenging to compare their findings to ours. This is because, to our knowledge, the present study is the only one that has matched the total rest duration between conditions. This specific study design has an important implication: it allows drawing conclusions regarding the direct effect of choice provision on the studied outcomes. Under a simple mediation model [34], the total effect of choice on outcomes can be broken down into (1) an indirect effect - the effect of choice mediated by rest (the effect that choice has on rest, which in turn has an effect on the

outcomes); and (2) the direct effect - the effect that choice has on the outcomes, regardless of the effect of rest. This implies that when rest durations are not matched, it is impossible to tease apart the direct and indirect effects of choice. Due to the utilized experimental design, our study made some progress in uncovering the relationship between choice and performance, which seems to be almost fully mediated by the rest duration. We note that the effect of choice is still not fully identifiable in our study, because we were only able to match total rest duration, rather than rest duration per interval. That is, non-constant rest durations between intervals could have an effect regardless of choice, even when total rest is equated. The independent effect of choice can potentially be identified using a between-subject yoked control design, in which a subject in the fixed group (yoked) is imposed with a rest duration selected by a subject from the SS group (e.g. [35,36]).

The practical implications of our results are that coaches and cyclists can choose to use either approach, based on their preferences or the qualities they aim to improve or monitor. Having the option to choose between the approaches can be beneficial, as each has its unique benefits. Using fixed rest durations provides cyclists with a degree of certainty regarding the session's configuration, which may allow them to focus on power production and be less concerned with tactical decisions. Fixed rest durations in HIIT protocols can also be used to monitor changes in performance, both between and within cyclists, while minimizing variance due to non-physiological factors (e.g. tactical decisions). In contrast, using SS rest durations provides cyclists with certain flexibility regarding a session's configuration. This can better account for between- and within-subject preferences and abilities. Some may prefer and benefit from shorter rest durations in the first few intervals, and longer rest durations in the latter intervals, whereas the opposite may be true for others. Over time, practicing such flexibility may place a greater focus on planning, exploring, and developing personalized rest allocation strategies. Finally, providing persons with choices is also known to have positive psychological effects [10–12].

To inspect the reliability of the SS condition, a subgroup of ten cyclists completed the SS session twice, and achieved similar results in all outcomes. Interestingly, the pattern of rest allocation selected by cyclists remained remarkably similar. The general pattern of selecting longer rest duration in later intervals is consistent with other SS rest duration studies [21,25,37] and has a sound physiological basis. When subjects are fresh in the first few intervals, they require less rest before initiating the next interval. In contrast, in later intervals, when fatigue has accumulated, longer rest durations are required to maintain or improve performance in subsequent intervals. The latter highlights a limitation of fixed and equal rest durations between intervals, as it may lead cyclists to rest for overly long durations initially, and for overly short durations in the final intervals.

This study has a number of limitations worthy of discussion. First, the HIIT protocol was conducted on an SRM ergometer using the isokinetic mode. While this allowed to exert control over cyclists' cadence, and thus increase the degree of internal validity, it is unclear if the results generalize to more realistic cycling scenarios. Second, we only included male amateur cyclists. It is thus unclear if the observed results generalize to females, novice and professional cyclists, or to other sports (e.g., running or rowing). Finally, the allocated 12 minutes of rest duration in the SS condition may have been too long. That is, deciding how to distribute this relatively long duration over eight rest periods may have been too challenging. The fact that cyclists were left with approximately two minutes of rest in the last rest period could stem from them inaccurately planning their rest allocation. However, the alternative, in which cyclists planned their rest allocation as part of a strategy is also likely. The latter is supported by the test-retest results in which cyclists chose the same rest allocation pattern. Future studies could examine if shorter SS rest durations, provided over fewer intervals, can lead to different results, and inspect when and why cyclists selected their rest allocation.

To conclude, to our knowledge, this is the first study to compare the fixed and SS rest durations approaches on performance, physiological, and psychological outcomes, in a HIIT cycling protocol, with matched total rest durations. We observed highly similar outcomes under both conditions. These findings are practically useful, as they suggest that coaches and cyclists can follow either of the approaches based on their preferences and specific training goals.

Authors' contributions

EC, JC, and IH designed the study; EC and EO collected the data; EO, UO, and IH analyzed the data; EC, EO, JC, UO and IH wrote the manuscript. All authors have read and approved the final version of the manuscript.

Acknowledgements

Not applicable.

Funding

This study was supported by the Tel Aviv University - McGill University Research Collaboration Fund.

Availability of data and materials

The raw data and supplementary materials can be found online at <https://osf.io/equwy>

Competing interests

The authors declare that they have no competing interests.

References

1. Buchheit M, Laursen PB. High-intensity interval training, solutions to the programming puzzle: part II: Anaerobic energy, neuromuscular load and practical applications. *Sports Med.* 2013;43(10):927–54.
2. Laursen P, Buchheit M, editors. *Science and application of high-intensity interval training.* Champaign, IL, USA: Human Kinetics; 2019.
3. Billat LV. Interval training for performance: a scientific and empirical practice. *Sports Med.* 2001;31(1):13–31.
4. Laursen. Training for intense exercise performance: high-intensity or high-volume training?: High-intensity and high-volume training. *Scand J Med Sci Sports.* 2010 Sep 14;20:1–10.
5. Buchheit M, Laursen PB. High-intensity interval training, solutions to the programming puzzle: part I: cardiopulmonary emphasis. *Sports Med.* 2013;43(5):313–38.
6. Midgley AW, McNaughton LR. Time at or near VO₂max during continuous and intermittent running - A review with special reference to considerations for the optimisation of training protocols to elicit the longest time at or near VO₂max. *J Sports Med Phys Fitness.* 2006;46(1):1–14.
7. Parmar A, Jones TW, Hayes P R. The dose-response relationship between interval-training and VO₂max in well-trained endurance runners: A systematic review. *J Sports Sci.* 2021;39(12):1410–27.
8. Wen D, Utesch T, Wu J, Robertson S, Liu J, Hu G, et al. Effects of different protocols of high intensity interval training for VO₂max improvements in adults: A meta-analysis of randomized controlled trials. *J Sci Med Sport.* 2019;22(8):941–7.
9. Schoenmakers PPJM, Hettinga FJ, Reed KE. The moderating role of recovery durations in high-intensity interval-training protocols. *Int J Sports Physiol Perform.* 2019;14(6):859–67.
10. Leotti LA, Iyengar SS, Ochsner KN. Born to choose: The origins and value of the need for control. *Trends Cogn Sci.* 2010;14(10):457–63.
11. Patall EA, Cooper H, Robinson JC. The effects of choice on intrinsic motivation and related outcomes: A meta-analysis of research findings. *Psychol Bull.* 2008;134(2):270–300.
12. Fidalgo A, Joi S, Lattari E, de Oliveira B, Pilon R, Farinatti P, et al. Influence of HIIRT with fixed and self-selected recovery intervals on physiological, affective, and enjoyment

- responses. *Res Q Exerc Sport*. 2022;
13. Halperin I, Chapman DW, Martin DT, Lewthwaite R, Wulf G. Choices enhance punching performance of competitive kickboxers. *Psychol Res*. 2017;81(5):1051–8.
 14. Dello Iacono A, Beato M, Halperin I. Self-selecting the number of repetitions in potentiation protocols: enhancement effects on jumping performance. *Int J Sports Physiol Perform*. 2021;16(3):353–9.
 15. Emanuel A, Har-Nir I, Rozen Smukas II, Halperin I. The effect of self-selecting the number of repetitions on motor performance and psychological outcomes. *Psychol Res*. 2021 Sep;85(6):2398–407.
 16. Watson K, Halperin I, Aguilera-Castells J, Dello Iacono A. A comparison between predetermined and self-selected approaches in resistance training: Effects on power performance and psychological outcomes among elite youth athletes. *PeerJ*. 2020;8:e10361.
 17. Wingfield G, Marino F, Skein M. The influence of knowledge of performance endpoint on pacing strategies, perception of effort, and neural activity during 30-km cycling time trials. *Physiol Rep*. 2018;6(21):1–13.
 18. Wulf G, Adams N. Small choices can enhance balance learning. *Hum Mov Sci*. 2014;38:235–40.
 19. Seiler S, Hetlelid KJ. The impact of rest duration on work intensity and RPE during interval training. *Med Sci Sports Exerc*. 2005;37(9):1601–7.
 20. Gibson N, Brownstein C, Ball D, Twist C. Physiological, perceptual and performance responses associated with self-selected versus standardized recovery periods during a repeated sprint protocol in elite youth football players: A preliminary study. *Pediatr Exerc Sci*. 2017;29(2):186–93.
 21. McEwan G, Arthur R, Phillips SM, Gibson NV, Easton C. Interval running with self-selected recovery: physiology, performance, and perception. *Eur J Sport Sci*. 2018;18(8):1058–67.
 22. Brownstein CG, Ball D, Micklewright D, Gibson NV. The effect of maturation on performance during repeated sprints with self-selected versus standardized recovery intervals in youth footballers. *Pediatr Exerc Sci*. 2018;30(4).
 23. Engel FA, Altmann S, Chtourou H, Woll A, Neumann R, Yona T, et al. Repeated sprint protocols with standardized versus self-selected recovery periods in elite youth soccer players: can they pace themselves? A replication study. *Pediatr Exerc Sci*. 2022;34(4).
 24. Rodríguez-Barbero S, Rodrigo-Carranza V, Santos-García DJ, Ravé JMG, González-Mohíno F. Acute effects of long interval training with varied recovery periods in trained runners. *In Review*; 2022.
 25. Schoenmakers PPJM, Reed KE. The effects of recovery duration on physiological and perceptual responses of trained runners during four self-paced HIIT sessions. *J Sci Med*

- Sport. 2019;22(4):462–6.
26. Mujika I, Padilla S. Physiological and performance characteristics of male professional road cyclists. *Sports Med.* 2001;31(7):479–87.
 27. Hebisz P, Hebisz R, Zatoń M, Ochmann B, Mielnik N. Concomitant application of sprint and high-intensity interval training on maximal oxygen uptake and work output in well-trained cyclists. *Eur J Appl Physiol.* 2016 Aug 1;116(8):1495–502.
 28. Laursen PB, Shing CM, Peake JM, Coombes JS, Jenkins DG. Interval training program optimization in highly trained endurance cyclists. *Med Sci Sports Exerc.* 2002;34(11):1801–7.
 29. Halperin I, Emanuel A. Rating of Perceived Effort: Methodological Concerns and Future Directions. *Sports Med.* 2020 Apr;50(4):679–87.
 30. Micklewright D, St Clair Gibson A, Gladwell V, Al Salman A. Development and validity of the rating-of-fatigue scale. *Sports Med.* 2017;47(11):2375–93.
 31. Ostrow KS, Heffernan NT. Testing the validity and reliability of intrinsic motivation inventory subscales within ASSISTments. In: Penstein Rosé C, Martínez-Maldonado R, Hoppe HU, Luckin R, Mavrikis M, Porayska-Pomsta K, et al., editors. *Artificial Intelligence in Education.* Cham: Springer International Publishing; 2018. p. 381–94.
 32. Kooiman DBJ, Li DW, Michael D, Kim DH. Validation of the relatedness scale of the intrinsic motivation inventory through factor analysis. *Int J Multidiscip Res Mod Educ.* 2016;1(2):302–11.
 33. Wood SN. *Generalized additive models - An introduction with R.* 2nd ed. New York: Chapman and Hall/CRC; 2017.
 34. Hernán MA, Robins JM. *Causal Inference: What If.* 1st ed. Boca Raton: Chapman & Hall/CRC; 2020.
 35. Patterson JT, Carter M. Learner regulated knowledge of results during the acquisition of multiple timing goals. *Hum Mov Sci.* 2010;29(2):214–27.
 36. Aiken CA, Fairbrother JT, Post PG. The effects of self-controlled video feedback on the learning of the basketball set shot. *Front Psychol.* 2012;3(338):1–18.
 37. Glaister M, Witmer C, Clarke DW, Guers JJ, Heller JL, Moir GL. Familiarization, reliability and evaluation of a multiple sprint running test using self-selected recovery periods. *J Strength Cond Res.* 2010;24(12):3296–301.